

Protecting Our Waters

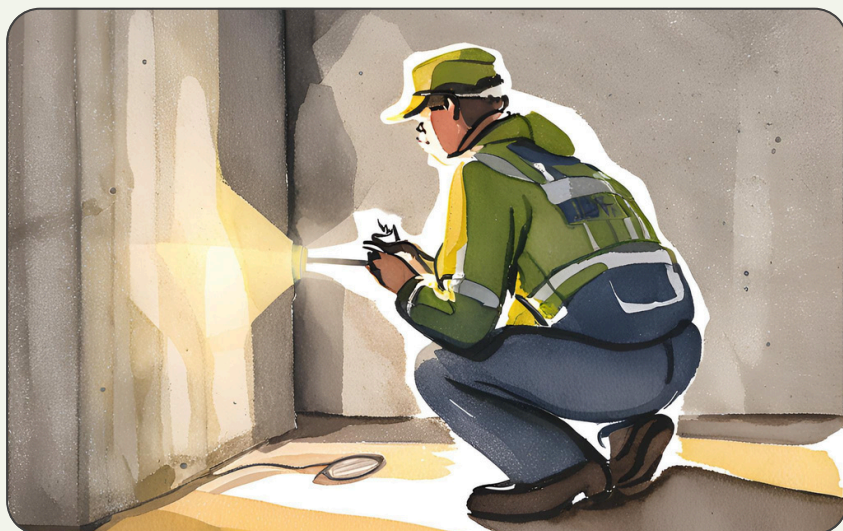
Floor Drain Management at LaRC

Floor drains at LaRC discharge to the sanitary sewer and stormwater system (in our older facilities). Management of chemicals around our floor drains is essential to protecting our public waters. The Environmental Management Office (EMO) has put together some tips to manage our facilities around floor drains.

What NOT to Put Down Floor Drains

- Chemicals
- Oils
- Solid debris
- Any unapproved waste materials

Floor drains should only handle wastewater discharges approved by the EMO.



Preventing Contamination: Key Strategies

Minimize Risks

- Contain oily or hazardous wastes in designated and appropriately labeled containers.
- Store oil and chemical containers away from drains.
- Ensure containers are sealed properly.
- Use drip pans or berms under equipment.
- If necessary, install oil absorbent socks around drains.
- Dispose of saturated, soiled, or used oil-absorbing materials.
- Clean up litter and debris immediately.
- Communicate with other employees and stay informed about the unique risks to drains at your facility.

Visually Inspect

Typical indicators of a spill around a floor drain include:

- Oily sheens or discoloration in and around drain areas.
- Unusual odors around floor drains.
- Visible debris or chemical residues.



Spill Response and Reporting

Despite best efforts, spills and leaks can occur around facility floor drains. In case of spills or leaks at LaRC, follow these steps:

01. Stop the Source

Locate and safely stop the source of the illicit discharge, such as setting a container upright, plugging a leak, or closing a valve.

03. Assess

Determine the size of the spill and level of response needed.

- **Incidental or Small Spills:** You may clean up yourself if you can do so safely and are comfortable doing so.
- **Emergency or Large Spills:** Notify the NASA Langley Emergency Dispatcher at Center Landline Phone: 911 / Cell Phone: (757) 864-2222.

05. Contain the Spill

Locate the nearest spill kit and use the appropriate absorbents to contain the spill. Divert the spill away from drains and from entering the environmental as much as possible.

02. Identify

Identify the spilled material and the quantity. Determine if the spill could affect human health and/or has entered a drain or has entered the environment through other means.

04. Personal Protective Equipment (PPE)

Always wear the correct PPE when cleaning up spills. Refer to the Safety Data Sheet (SDS) of the spilled material for information on PPE and hazards.

Your awareness is crucial in preventing water pollution and maintaining the health of our local water ways. By implementing these best management practices, you help:

- Prevent potential illicit discharges and environmental contamination
 - Avoid regulatory violations
 - Maintain a safe and clean workplace
- EMO is ready to assist you! For specific questions or support, contact the appropriate program representative.**

