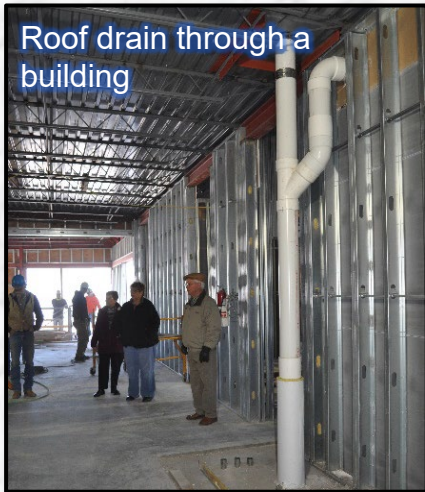


Facility Stormwater Connections at NASA Langley

NASA Langley Research Center is located on the Chesapeake Bay. Stormwater drains off the Center to three local waterways without any treatment: Brick Kiln Creek, Tabbs Creek, and the Back River. From there, our stormwater heads into the Bay. NASA Langley operates under three water discharge permits that set limits on the wastewater that leaves our Center. As such, it is important to understand and reduce ways pollution can reach our stormwater from everyday activities.

Examples



Roof drain through a building



Sump pump



Floor drain



Pervious pavers are stormwater features

Returning to On-Site Work

At NASA Langley, stormwater connections may look different at each facility. Depending on the age and type of facility, there could be basement sump pumps, roof drains, floor drains, and cooling tower blowdown that are connected to the storm system. Your facility may also have green infrastructure systems that have stormwater underdrains installed. It is helpful to get to know your facility and learn to recognize what may be a stormwater connection, so you are familiar with areas in the facility that are at risk for stormwater pollution.

While many of us have been working from home the past year, various Center facilities have still been running. As we make our way back into our respective facilities, take the time to reacquaint yourself with your surroundings. Inspect your work areas fully, ensure your equipment is functioning properly, pinpoint any surrounding stormwater connections, and confirm the location of facility spill kits. If something seems “off”, report it to your Facility Coordinator. **Situational awareness is an important factor in helping the Center minimize the potential for water pollution!**

Responding to Illicit Discharges

You may have seen these types of connections and not realized they are stormwater connections or that the water goes **UNTREATED** directly to our local waterways. But now you know! And it's important to be aware that anything flowing into these connections that is not composed entirely of stormwater could be considered an *illicit discharge*. Here is a **QUICK OVERVIEW** of what to do if you see an illicit discharge, like a **spill**:

1: Assess

- Determine the size of the spill.
 - Incidental or Small Spills - you may clean up yourself (if comfortable doing so).
 - Emergency or Large Spills – **STOP** and notify the NASA Langley Emergency Dispatcher: Center Landline Phone: 911 / Cell Phone: (757) 864-2222



Pumping out illicitly discharged material from outfall



2: Identify

- Identify the spilled material and how much was spilled. Identify if the spilled material has potential to affect human health or has entered the environment through a stormwater connection or grassy area.

3: Personal Protective Equipment (PPE)

- Always wear the correct PPE when cleaning up spills. You can refer to the Safety Data Sheet (SDS) of the spilled material for information on PPE and other hazards.

4: Contain the Spill

- Locate nearest spill kit; use absorbents to contain the spill.
- Divert the spill away from any stormwater connections and other waterways by using items found in the spill kit (absorbent socks, pads, etc..)



5: Stop the Source

- IF this hasn't already happened, locate and safely stop the source of the illicit discharge. Most of the time stopping the source is as simple as setting a container upright, plugging a leak, or closing a valve.

If you see an **ILLICIT DISCHARGE** or a **SPILL**, contact Emergency Dispatch at **911 (Center Landline)** or **757.864.2222 (Cell Phone)**.

Let's work together to keep our water clean!

LaRC Environmental Management Office: Ande Remington (757.864.8332), Sarat Calamur (757.864.4791), or Jazmin Argarin (757.864.7031).