

# PREVENT LITTER FROM REACHING OUR WATERWAYS

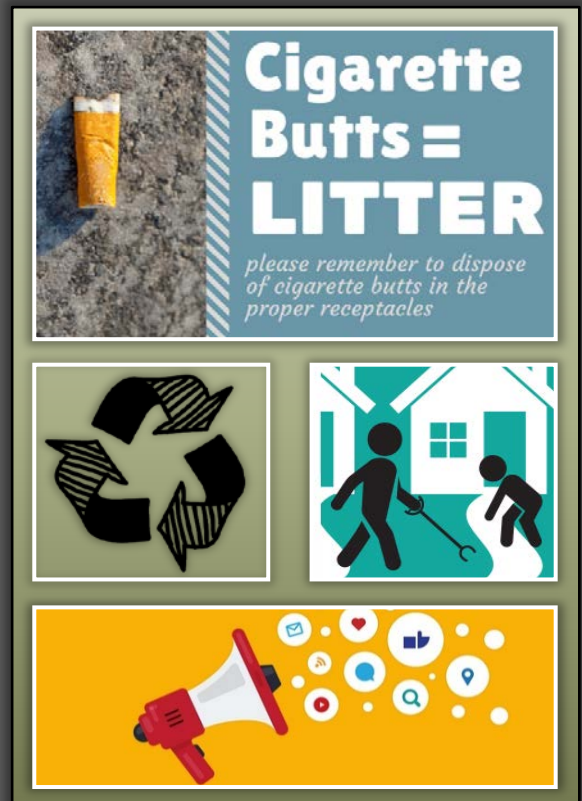
**LITTER**, by definition, is any solid or liquid waste product that has been disposed of **IMPROPERLY** at an **UNDESIRABLE** location. Litter is detrimental to people, animals and the environment. Although states spend millions of dollars each year for litter removal, more often than not it ends up in our oceans.

**CIGARETTE BUTTS** are one of the most littered items internationally - of the **5.6 trillion cigarettes** manufactured worldwide, at least **two-thirds are dumped irresponsibly**-. Cigarettes release toxins into the environment, and around 98% of **CIGARETTE FILTERS ARE MADE OF PLASTIC FIBERS**, called *cellulose acetate*, which can take up to a **DECADE TO BREAK INTO MICROPLASTICS** (learn more about cigarette litter impacts by visiting [truthinitiative.org](http://truthinitiative.org)).

**THE UNFORTUNATE TRUTH IS THAT ANY LITTER FOUND IN OUR LOCAL WATERS, AND EVEN MILES AWAY IN THE MIDDLE OF THE OCEAN, COMES FROM US.**

## EVERY ACTION COUNTS!

- ✓ Don't throw cigarette butts or any trash on the floor. Instead, properly dispose of them in receptacles provided.
- ✓ Limit your use of single-use, disposable plastics by choosing reusable alternatives.
- ✓ Participate in recycling. At LaRC, clean plastic bags and films are collected annually during the months of April and October!
- ✓ Beautify your city by volunteering in cleanup groups. Check the Environment section of @LaRC headlines for advertised activities.
- ✓ Encourage others by setting the example.



For more information on LaRC's **Illicit Discharge Detection and Elimination (IDDE)** program visit our environmental website at <https://environmental.larc.nasa.gov/water/idde/>. The LaRC Water Quality team asks that you **REPORT** illegal dumping, pollution, or spills on Center by contacting the **environmental office** at **4-7517** or **4-7243** or through our **online form** (<https://environmental.larc.nasa.gov/reporting-water-pollution/>).