

DUMPSTER MANAGEMENT

Illicit Discharge Detection and Elimination

March 2017

Preventing Water Pollution

Learn how to stop pollutants from reaching the Chesapeake Bay

Almost every facility at NASA Langley Research Center (LaRC) generates waste and temporarily stores it on-site. Many facilities store the waste in dumpsters or bins outdoors and are often out of sight.

These bins can be a major source of stormwater pollution if they are not properly maintained. Open dumpsters may collect rain water that mixes with the contents of the dumpster. This polluted water can spill or leak from the container.

Additionally, rain may wash leaking materials, spills, and trash from the dumpsters into nearby storm drains. This runoff may contain grease, litter, bacteria, and chemicals that are harmful to our nearby creeks and streams. Properly maintained dumpsters can prevent stormwater pollution, while also preventing unsightly conditions and unpleasant odors.



Only Rain Down the Drain



An illicit discharge is a big problem in some areas because it is not always easy to detect and can often go unnoticed. It is also a large source of pollution into our waterways. The first thing you can do is understand what an illicit discharge is:

ILLICIT DISCHARGE:

Any discharge (release) to the stormwater sewer system that is NOT composed entirely of stormwater.

Consider what materials and pollutants may be present when placing materials near storm drains. Only clean, unchlorinated water is allowed into the storm drain, which ends up in our local streams and the Chesapeake Bay.



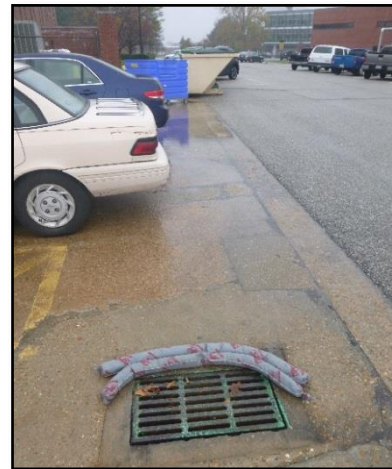
Water that flows into storm drains in the streets and parking lots doesn't go through a treatment plant first – this water dumps directly into the creeks behind LaRC, and eventually into the Chesapeake Bay.

What to Look For

To Prevent Water Pollution



- Inspect dumpsters regularly for leaks.
- Inspect the area around the dumpster regularly for litter or stains. Stains can be a sign of a recent leak.
- Inspect the bottom edges of the dumpster for holes from damage or rust.
- Control litter by making sure waste is contained in dumpsters.
- Avoid or minimize placing liquid waste, grease, or leaky garbage bags into dumpsters. Place liquid waste in closed (or sealed) containers for disposal just prior to your scheduled pickup.
- Never place products containing oil or hazardous waste in a dumpster. These items must be properly disposed of through LaRC's Waste Management Program (call 5-DRUM).
- Do not hose out the dumpster interior. Apply absorbent materials over any liquids spilled in the dumpster.
- If the dumpster has a lid, keep the lid tightly closed to keep rainwater out and prevent leaks. Replace damaged or missing lids.
- If necessary, post signs that indicate the materials that can be placed in the dumpster.
- Check the dumpster regularly for unacceptable materials.
- Use a non-permeable liner when using a dumpster for concrete washout. Be careful when moving the dumpster to prevent spilling or splashing.



Report dumpster leaks or water pollution to the LaRC Environmental team.

Peter Van Dyke (757.864.7517) or Ande Remington (757.864.2451)

*In an emergency, always call 911 (from a Center phone) or 757.864.2222 (from a cell phone)

LET'S WORK TOGETHER TO
KEEP OUR WATER CLEAN!